



About the adequate plant size for flowering

2005/9/7



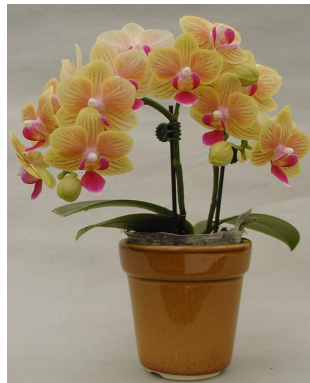
In the natural world of Phalaenopsis, the plant can start flowering at all sizes as long as it is ready and the environmental conditions fit. While to the commercial production, we work to manage the conditions to produce the best quality of it.

Talking about the quality, in spite of the visible characteristics and the lastingness of the flowers, which are oriented by breeding program and come up with a Commercialized Variety.

We simply think of the numbers of the flowers and spikes per plant. Is that right?

As mentioned in our website, the unlimited diversity of Phalaenopsis is SOGO-Orchids' philosophy of breeding. With the availability of its diversity, one can now develop more segmented markets.

In the descriptions of each variety shown on our website, we try to indicate the possible adequate plant size (the pot size) for flowering. This is based on our experiences to the variety, which the performance of it can be more qualified to certain segmented market's requirement at that plant size.





世芥蘭業

世芥蘭業有限公司

SOGO TEAM Co.,Ltd.



Flowering at different plant sizes, of different varieties.



SOGO TEAM Co., Ltd. info@sogo-orchids.com.tw, www.sogo-orchids.com.tw, Tel:+886-7-683-0190/ Fax: 683-3949

Superior Orchids Growers' Organization



Advised List of Adequate Size for Applications

Pot size (inch)	1.7	1.7	1.7		
Time after transplant	4 months	5 months	6 months		
For Grand flora types	Transplant				
For Waxy types		Transplant			
For Mini types		Transplant	Flowering		

PS, 1.7" can be transplanted into 2.5"~3.0" pots after the advised maturity.
Or to start flowering for certain types.

Pot size (inch)	2.5~2.8	2.5~2.8	2.5~2.8	2.5~2.8	
Time after transplant	4 months	5 months	6 months	7 months	
For Grand flora types	Transplant			Flowering	
For Waxy types		Transplant			
For Mini types		Transplant		Flowering	

PS, 2.5"~2.8" can be transplanted into 3.5" pot after the advised maturity.
Or to start flowering for certain types.

Pot size (inch)		3.0	3.0	3.0	3.0
Time after transplant		5 months	6 months	7 months	8 months
For Grand flora types			Flowering		
For Waxy types			Flowering		
For Mini types			Flowering		

PS, 3.0" can be ready for flowering after the advised maturity.

Pot size (inch)	3.5	3.5	3.5	3.5	3.5
Time after transplant	4 months	5 months	6 months	7 months	8 months
For Grand flora types			Flowering		
For Waxy types			Flowering		
For Mini types			Flowering		

PS, 3.5" can be ready for flowering after the advised maturity.

Somehow, these would also depend on the variety characteristics and the quality requirements of the markets.